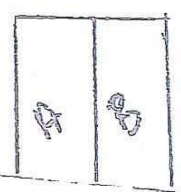
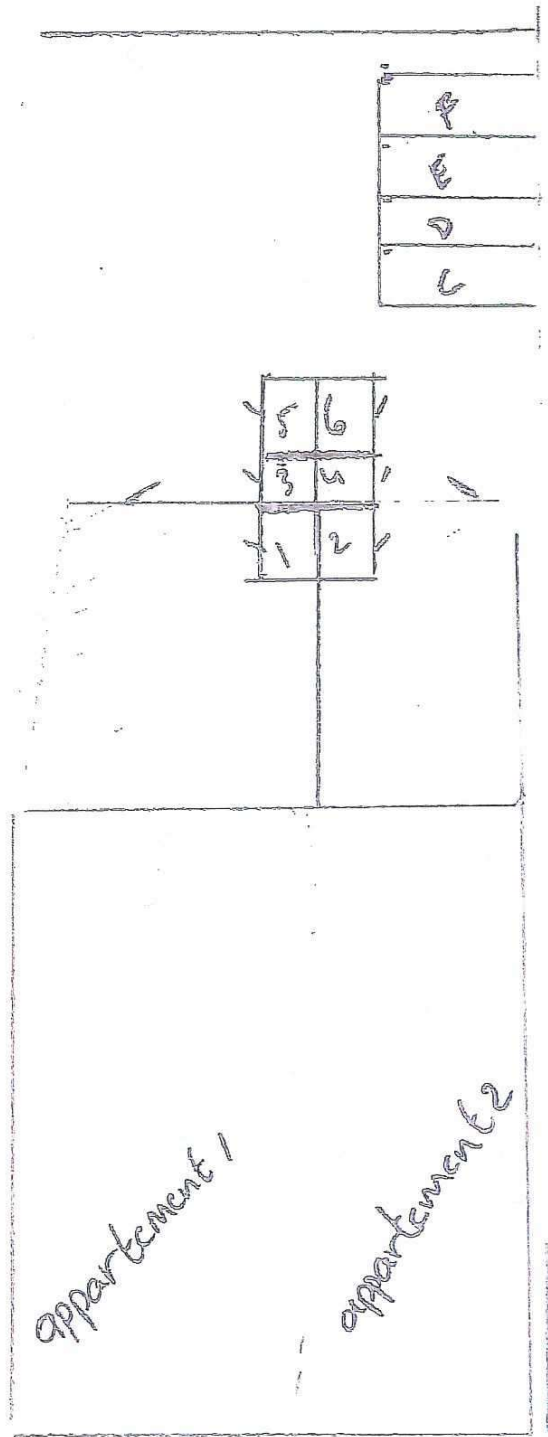
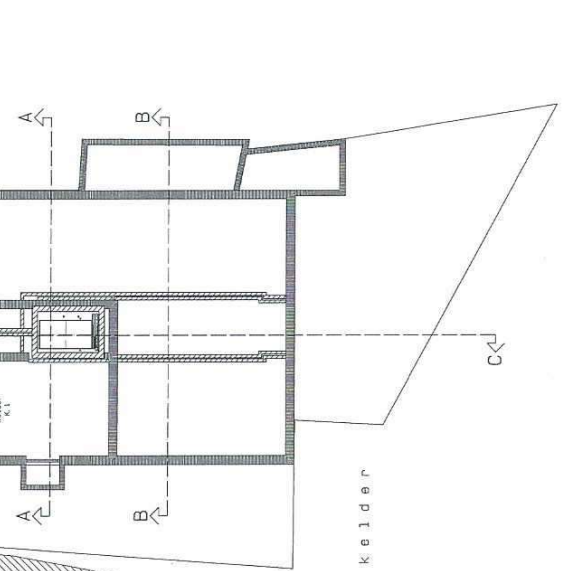
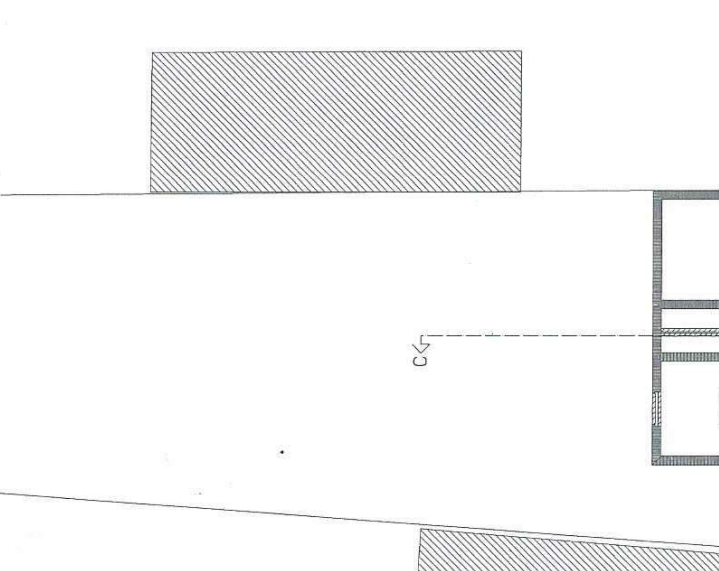
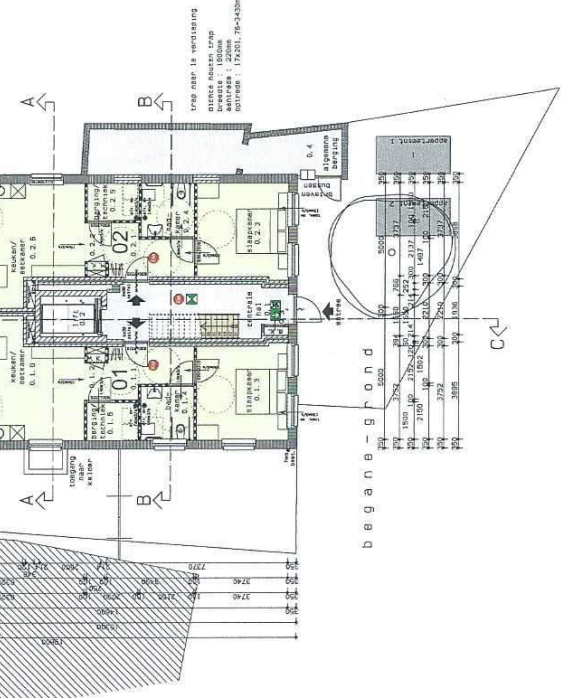
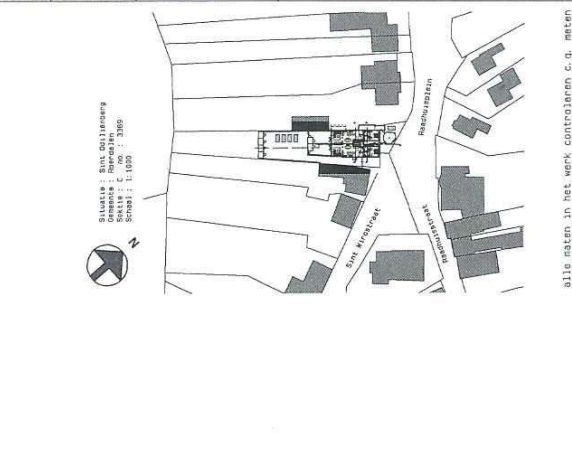
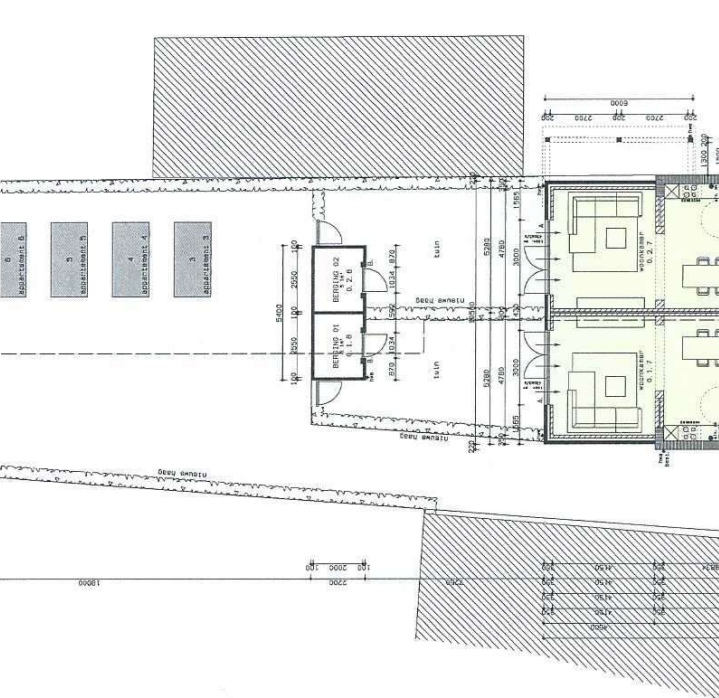
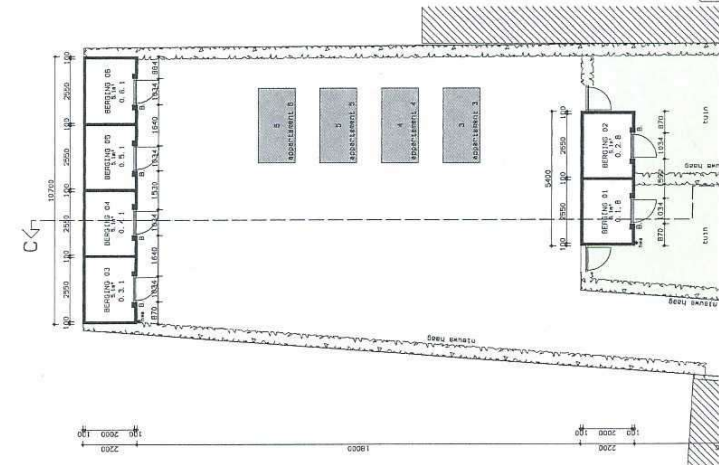


1 + m 6 → tuinhuisjes
A + m F → parkeerplaatsen





Dhr. Janssen
 Rijkswaterstaat
 6077 AB Sint-Dorlandweg
 tel. :
 herbestemming pand
 aan het Raadhuisplein 9
 te Sint-Dorlandweg
 Gemeente Noordzeeland
 Bestemmingsplan :
 - Kelder
 - Begane-grond
 - Situatie
 04.11.21

Janssen Wits
 architecten
 Janssen Wits
 Postbus 1000
 1512 ZG Almere
 T +31 (0)20 770 7700
 F +31 (0)20 770 7701
 www.janssenwits.nl

alle maten in het werk contraleren c.g. meten
 alle besloot- en afsluitingsstukjes
 volgens tekening en berekening constructeur

Project	04.11.21
Scale	1:100
Date	15.12.20
Client	A1
Project No.	19009
Phase	B.2
Version	6